

Firmenanschrift aufbewahren - Nicht geeignet für Kinder unter 3 Jahren! - Verschluckbare Kleinteile! Keep the address of the company - Not suitable for children under 3 years! - Contains small parts! Veuillez conserver l'adresse - Ne convient pas pour les enfants de moins de trois ans! - Contient de petites pièces pouvant être absorbées! Adres bewaren - Niet geschikt voor kinderen beneden 3 jaar! - Kleine onderdelen kunnen worden ingeslikt!

**SOL-EXPERT group**, C.Repyk - Mehlsstrasse 19 - D-88255 Baindt  
Tel.: +49 (0)7502 - 94115-0 - Fax: +49 (0)7502 - 94115-99  
info@sol-expert-group.de - [www.sol-expert-group.de](http://www.sol-expert-group.de)

MADE IN EUROPE



No. 44498



QR Codes

Hier geht es zur Anleitung:



<https://www.sol-expert-group.de/Rund-ums-Loeten/Pfiffige-Loetbausaeetze/USB-Ventilator-Loetbausatz::1276.html?language=de>

Click here for the instructions:



<https://www.sol-expert-group.de/All-about-soldering/Smart-kits-for-soldering/USB-fan-Loet-kit::1276.html?language=en>

Cliquez ici pour les instructions:



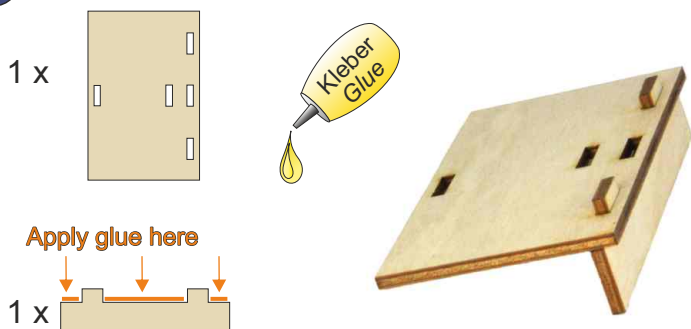
<https://www.sol-expert-group.de/Autour-de-la-soudure/Kits-astucieux-pour-la-soudure/Ventilateur-USB-kit-Loet::1276.html?language=fr>

Klik hier voor de instructies:

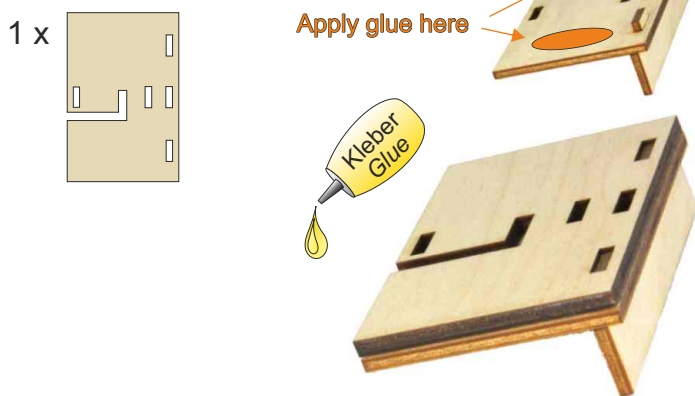


<https://www.sol-expert-group.de/Rond-solderen/Clever-kits-voor-het-solderen/USB-ventilator-Loet-kit::1276.html?language=nl>

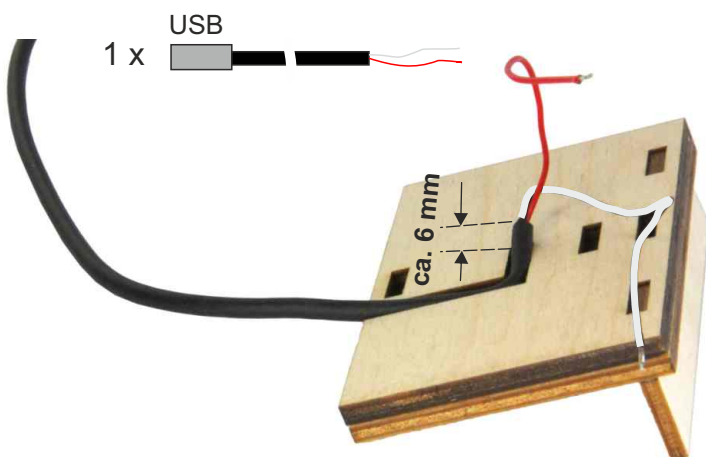
**A** Glue wooden parts



**B** Glue wooden parts together, fitting parts perfectly



**C** Push in cable with the wire sheathing protruding about 6 mm.



**Parts list:**

Qty.	Part
1	Wooden parts kit
2	M1.6 x 4 mm
2	M2 x 5 mm
2	M2 Nut
1	Propeller
1	Motor RF300
1	Sliding switch
1	USB cable

Is still is needed:  
Wood glue

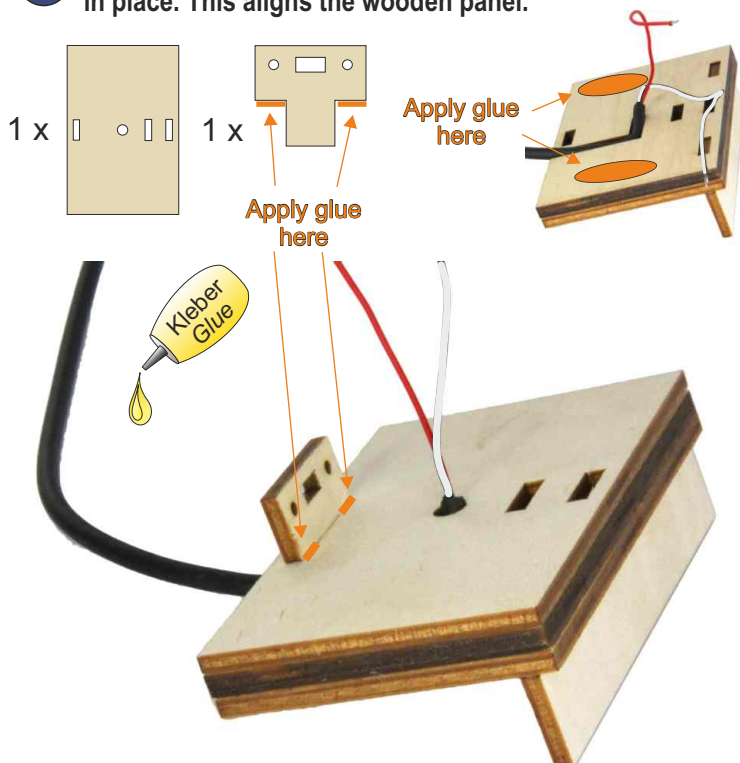
Dimensions:  
130 x 110 x 60 mm

Check and sort out parts!

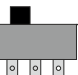




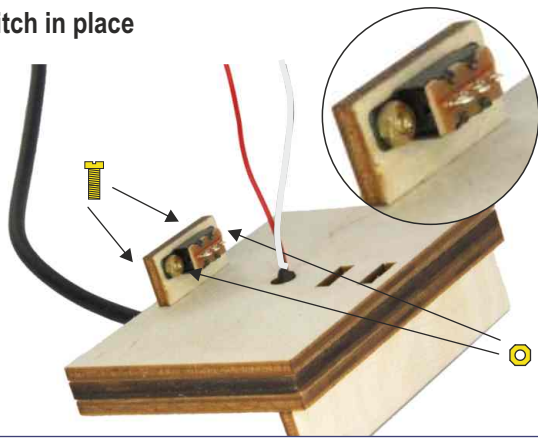
**Recommendation for children and teenagers:**  
Assembly and soldering should be supervised by an adult. **!**

**D** Glue on wooden panel. Then immediately glue the T-piece in place. This aligns the wooden panel.



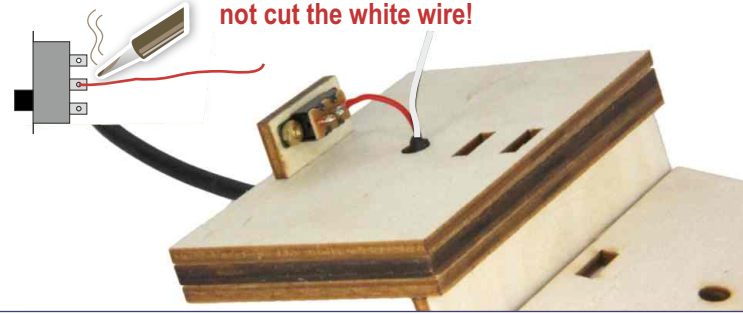
**E** Screw switch in place

- 1 x 
- 2 x  M2 x 5 mm
- 2 x 

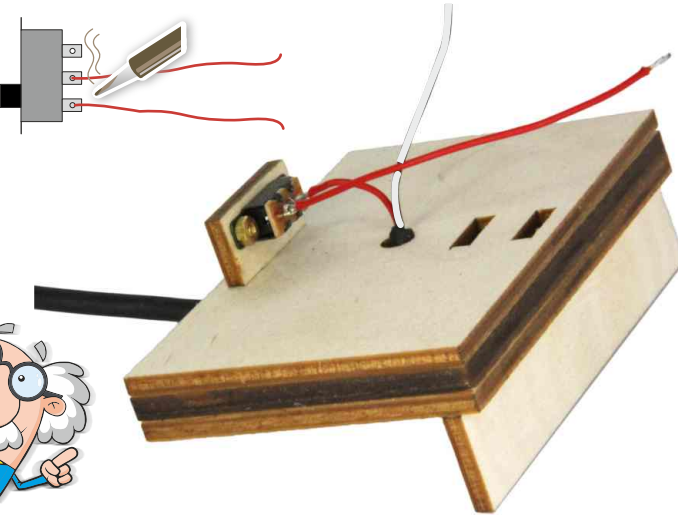


**F** Only cut, strip and solder the red wire from the USB cable to approx. 2.5 cm and solder to the middle contact on the switch.

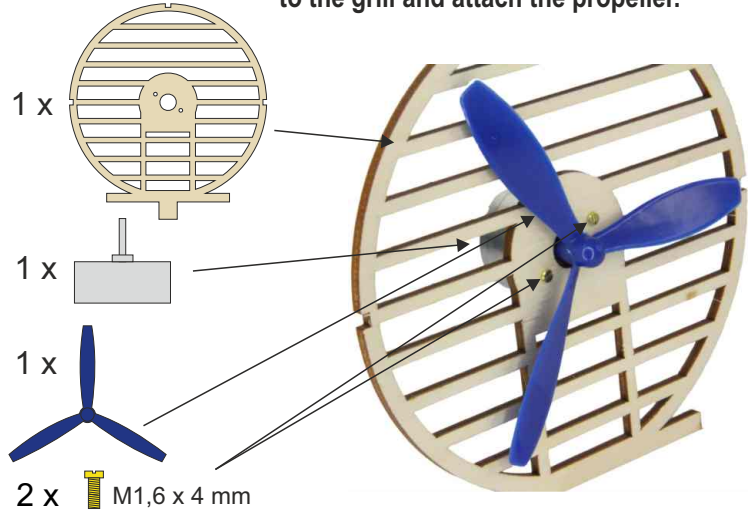
**ATTENTION:** do not cut the red wire too short, do not cut the white wire!



**G** Solder the rest of the red connector onto the switch.



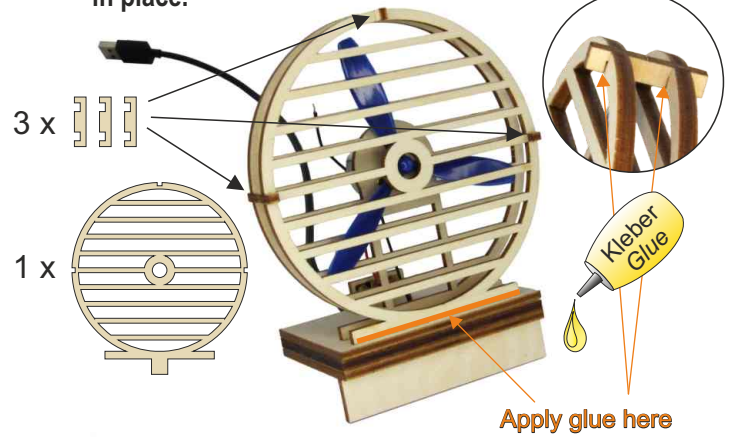
**H** Using the screws, attach the motor as tight as possible to the grill and attach the propeller.



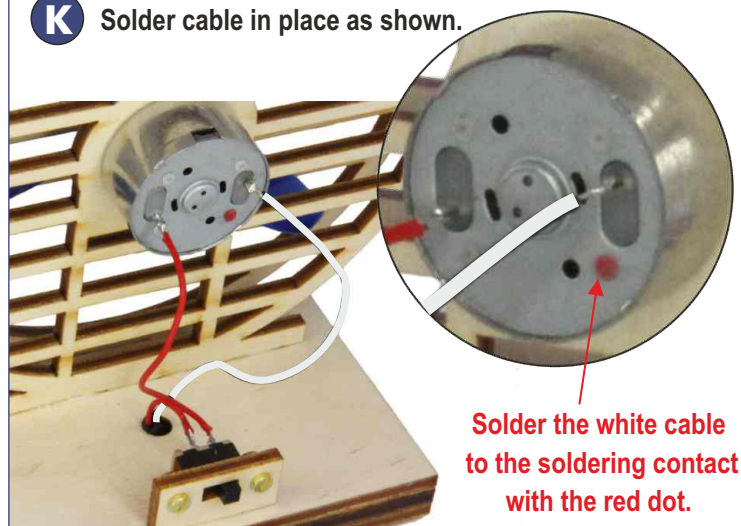
**I** Glue the motor bracket to the bottom plate



**J** Glue the second grill in place. Then glue 3 spacers in place.



**K** Solder cable in place as shown.



**L** Plug the fan into a power bank or USB port and switch on. Enjoy the cool air!

